

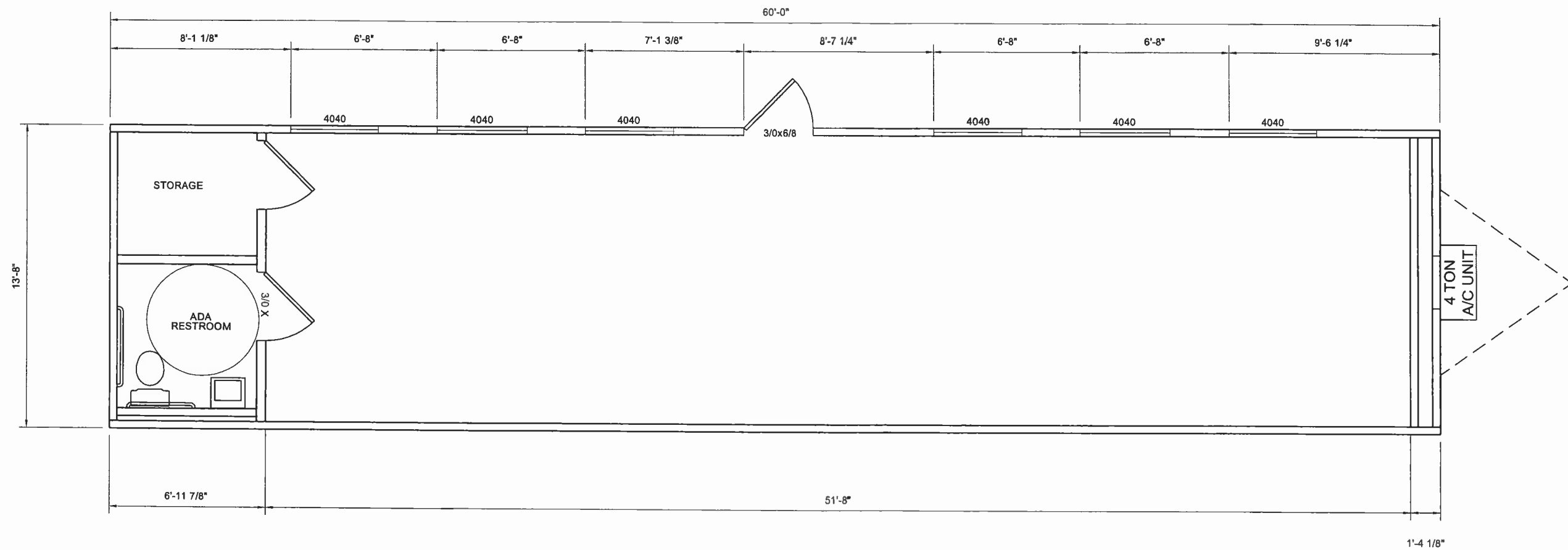


***COMMERCIAL PRICE LIST**
Effective Since March 1, 2006

Description	Size Specs.	Model	Cost Per SQF
Modular Office Buildings	≥ 800 SQF	Standard	\$45.60
DESIGN CRITERIA: NEC UBC IBC NFPA DESIGN LOADS: Roof Live Load: 20 psf Floor Live Load: 50 psf FRAME & CHASSIS: Outriggers: 96" on center Crossmembers: 48" on center Beam: 12" Jr. I-beam Hitch: Detachable hitch Axles: Quad w/brakes on two axles Tires: E (10-ply) Frame: Medium FLOOR: Bottom Board: Roll polyethylene fiber mesh Insulation: R-11 unfaced Joists: 2x6 No. 2 syp or better at 16" on center Sideband Joists: Double 2 X 6 syp or equal Decking: ¾" Plywood Floor Covering: 1/8" VCT or 26 oz. carpet Base: 4" vinyl		WINDOWS: Size/Type: Qty and Size per code, V.S. Bronze/Clear Brand: HR or equal DOORS: Exterior: 36" x 80" Steel, Qty per code Exterior Hardware: passage (levers) dead bolt Hydraulic closer Interior: 36" x 80" Mohawk-hollow core, Qty per code Interior Hardware: passage (levers) privacy (levers) Redi-frame (steel) Misc: wall mounted door stops ROOF: Rafters: 2x8 #2 syp or better @ 24" on center Rim Member: Single 2x8 syp # 3 Ridge Beam: 2 layer Ceiling: 2 x 4 Acoustic tile Insulation: R-19 unfaced Sheathing: 5/8" OSB w/ H-clips Roofing: .045 EPDM ELECTRICAL: Service: 120/240V	

Description	Size Specs.	Model	Cost Per SQF
Modular Office Buildings	≥ 800 SQF	Standard	\$45.60
<p>EXTERIOR WALLS: Studs: 2 x 4 No. 2 or better at 16" on center Bottom Plate: Single 2x4 spf No. 3 or better Top Plate: Dbl 2x4 spf No. 3 or better Headers: Double 2x4 with ½" plywood filler Insulation: R-11 faced</p> <p>EXTERIOR WALLS (cont):</p> <p>Sheathing 7/16" OSB & 15 lb felt or equiv Siding: 7/16" Smart Panel Color: Ivory with Green Trim</p> <p>INTERIOR WALLS: Studs: 2x4 stud spf No. 2 or better at 16" on center Bottom Plate: Single 2x4 spf No. 3 or better Top Plate: Double 2x4 spf No. 3 or better Headers: Single 2x4 flat Coverings: ½" VCG Trim: Standard VCG</p>		<p>Load Center: 100 amp interior mounted load centers Entrance: 1 ½" stub down Wiring: MC cable w/ #12 wire Lights: 48" T-12 4 tube fluorescent troffers w/ diffusers, Qty per occupancy requirement</p> <p>ELECTRICAL (cont):</p> <p>Porch light at exterior doors Recepts: standard 120v duplex receptacles, Qty per code</p> <p>HVAC: HVAC: Wall mounted with heat strip (Bard or equal) Thermostat: Icon standard Ducts: Fiberglass Supply: 24" x 24" Return-Air: Return air grilles @ hvac unit & jump ducts or plenum wall w/jump ducts w/ flex Misc: Fresh air ventilation is provided thru manual air damper in the hvac system</p>	

*Commercial price list created for GSA Schedule proposal for SINs 361-10A, -10E, -10H, and -32 based on Icon Construction's current commercial pricing and discount policies.



WINDOW LEGEND						
CALLOUT	NOMINAL SIZE	LIGHT	VENT	TYPE	FINISH	GLAZING
4040	4'-0" x 4'-0"	13.98	7.34	HORIZ. SLIDE	MILL	DUAL / CLEAR

DOOR LEGEND					
CALLOUT	NOMINAL SIZE	MATERIAL	HARDWARE	GLAZING	NOTES
3/0x6/8	3'-0" x 6'-8"	18ga. STEEL DOOR	PULL / PANIC	6 x 27	KEYED ALIKE
3/0 X	3'-0" x 6'-8"	PRE-FINISHED SOLID CORE	PUSH / PRIVACY	NONE	

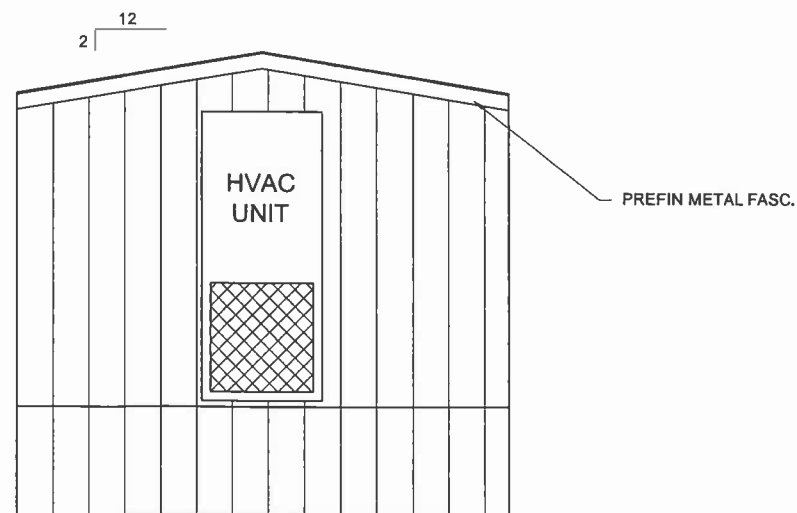
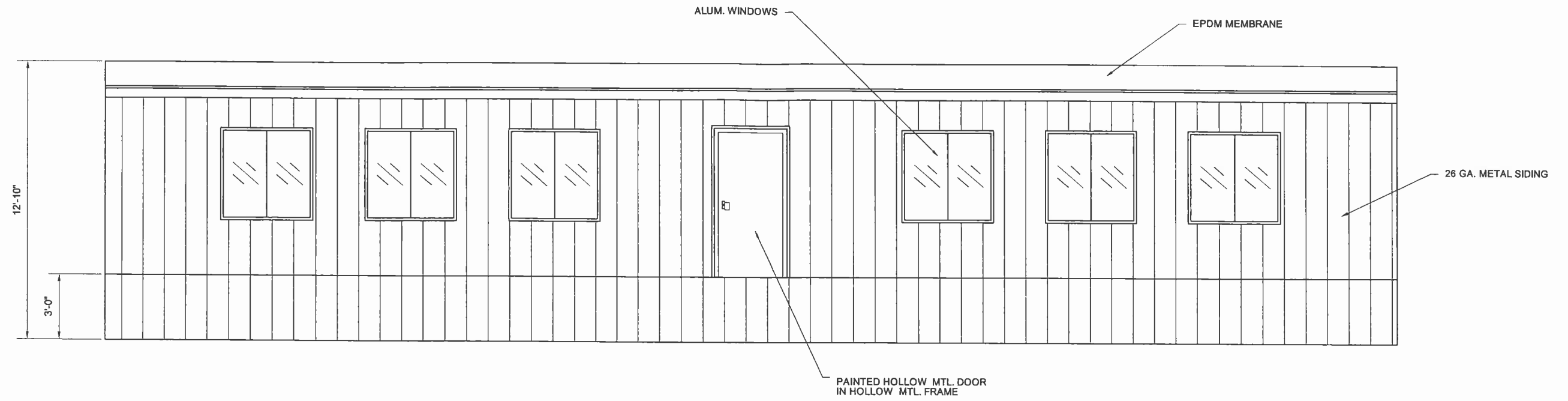
THRESHOLDS NOT TO EXCEED 1/2", AND ARE TO BE BEVELED IF IN EXCESS OF 1/4"

FLOOR PLAN IS A REPRESENTATION OF
 SAMPLE BUILDING
 CUSTOM CONFIGURATIONS ARE AVAILABLE
 UPON REQUEST

No.	DESCRIPTION	BY	DATE

DATE:	03/14/07
SCALE:	3/16"=1'-0"
PLOT SCALE:	1:1
DRAWN BY:	ES
CHECKED BY:	

FLOOR PLAN
 14 X 60 OFFICE



FLOOR PLAN IS A REPRESENTATION OF
 SAMPLE BUILDING
 CUSTOM CONFIGURATIONS ARE AVAILABLE
 UPON REQUEST

NOT FOR CONSTRUCTION

ICON CONSTRUCTION
© 2005, Icon Construction, Inc. All Rights Reserved

No.	DESCRIPTION	BY	DATE

DATE:	03/14/07
SCALE:	3/16"=1'-0"
PLOT SCALE:	1:1
DRAWN BY:	ES
CHECKED BY:	

ELEVATIONS
14 X 60 OFFICE

SHEET No.
A-3