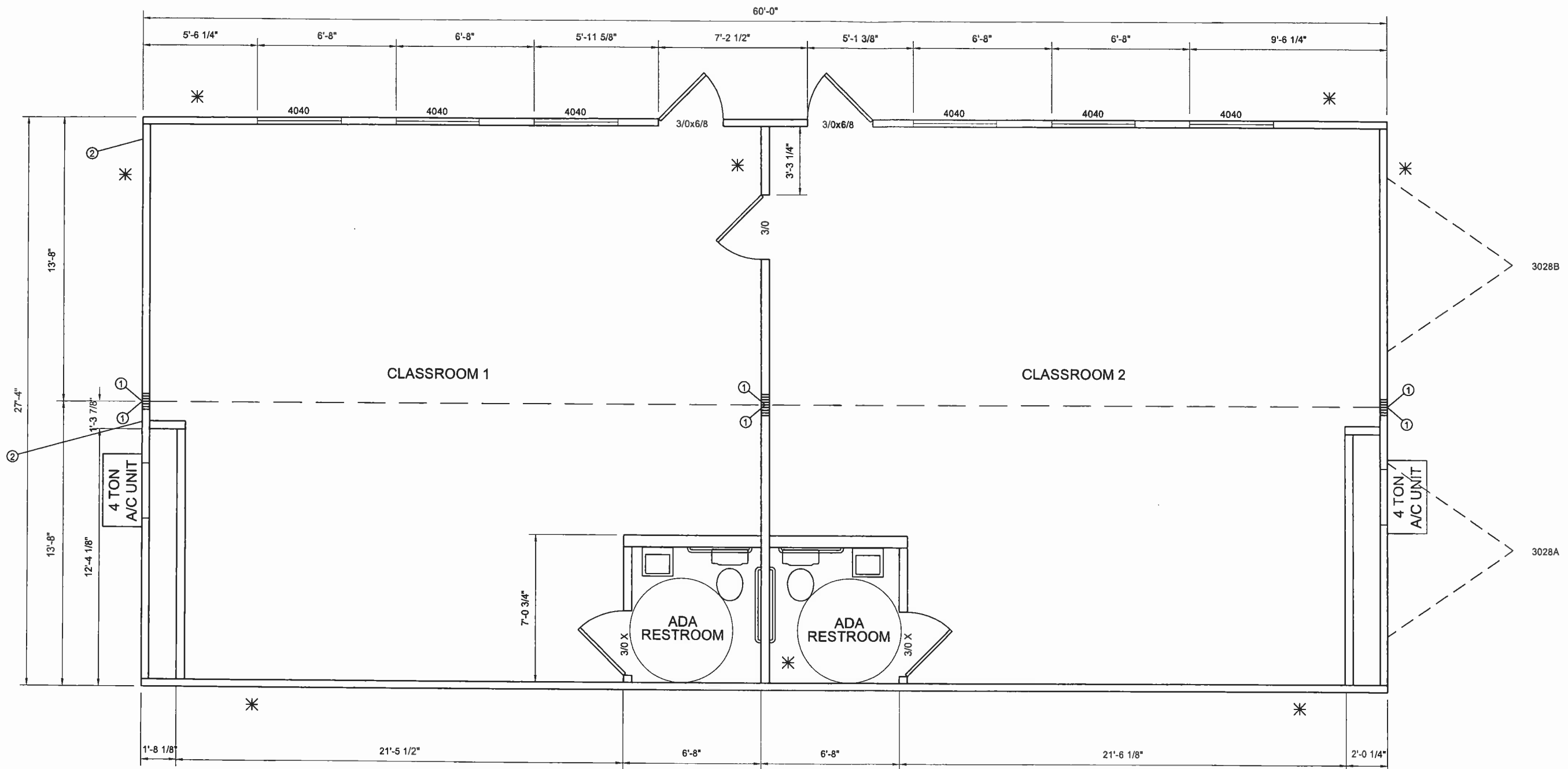




Description	Size Specs.	Model	Cost Per SQF
Pre-assembled Modular Building	≥ 800 SQF	Standard	\$45.60
<p><b>EXTERIOR WALLS:</b>  Studs: 2 x 4 No. 2 or better at 16" on center  Bottom Plate: Single 2x4 spf No. 3 or better  Top Plate: Dbl 2x4 spf No. 3 or better  Headers: Double 2x4 with ½" plywood filler  Insulation: R-11 faced</p> <p><b>EXTERIOR WALLS (cont):</b></p> <p>Sheathing 7/16" OSB &amp; 15 lb felt or equiv  Siding: 7/16" Smart Panel  Color: Ivory with Green Trim</p> <p><b>INTERIOR WALLS:</b>  Studs: 2x4 stud spf No. 2 or better at 16" on center  Bottom Plate: Single 2x4 spf No. 3 or better  Top Plate: Double 2x4 spf No. 3 or better  Headers: Single 2x4 flat  Coverings: ½" VCG  Trim: Standard VCG</p>		<p>Load Center: 100 amp interior mounted load centers  Entrance: 1 ½" stub down  Wiring: MC cable w/ #12 wire  Lights: 48" T-12 4 tube fluorescent troffers w/ diffusers, Qty per occupancy requirement</p> <p><b>ELECTRICAL (cont):</b></p> <p>Porch light at exterior doors  Recepts: standard 120v duplex receptacles, Qty per code</p> <p><b>HVAC:</b>  HVAC: Wall mounted with heat strip (Bard or equal)  Thermostat: Icon standard  Ducts: Fiberglass  Supply: 24" x 24"  Return-Air: Return air grilles @ hvac unit &amp; jump ducts or plenum wall w/jump ducts w/ flex  Misc: Fresh air ventilation is provided thru manual air damper in the hvac system</p>	

\*Commercial price list created for GSA Schedule proposal for SINs 361-10A, -10E, -10H, and -32 based on Icon Construction's current commercial pricing and discount policies.



\* - DENOTES SHEAR WALL LOCATION

① DENOTES 4-EA. 2X4'S AND 1-EA SIMPSON STRONG TIE MSTI-26 STRAP AT EACH SIDE OF MATE-LINE, FASTENED W/ 26 - 10d X 1 1/2" NAILS AT EACH STRAP.

② DENOTES TDLR LABEL LOCATION

WINDOW LEGEND						
CALLOUT	NOMINAL SIZE	LIGHT	VENT	TYPE	FINISH	GLAZING
4040	4'-0" x 4'-0"	13.98	7.34	HORIZ. SLIDE	VINYL	DUAL / CLEAR

DOOR LEGEND					
CALLOUT	NOMINAL SIZE	MATERIAL	HARDWARE	GLAZING	NOTES
3/0x6/8	3'-0" x 6'-8"	18ga. STEEL DOOR	PULL / PANIC	6 x 27	KEYED ALIKE
3/0	3'-0" x 6'-8"	PRE-FINISHED SOLID CORE	LEVER	NONE	
3/0 X	3'-0" x 6'-8"	PRE-FINISHED SOLID CORE	PUSH / PRIVACY	NONE	

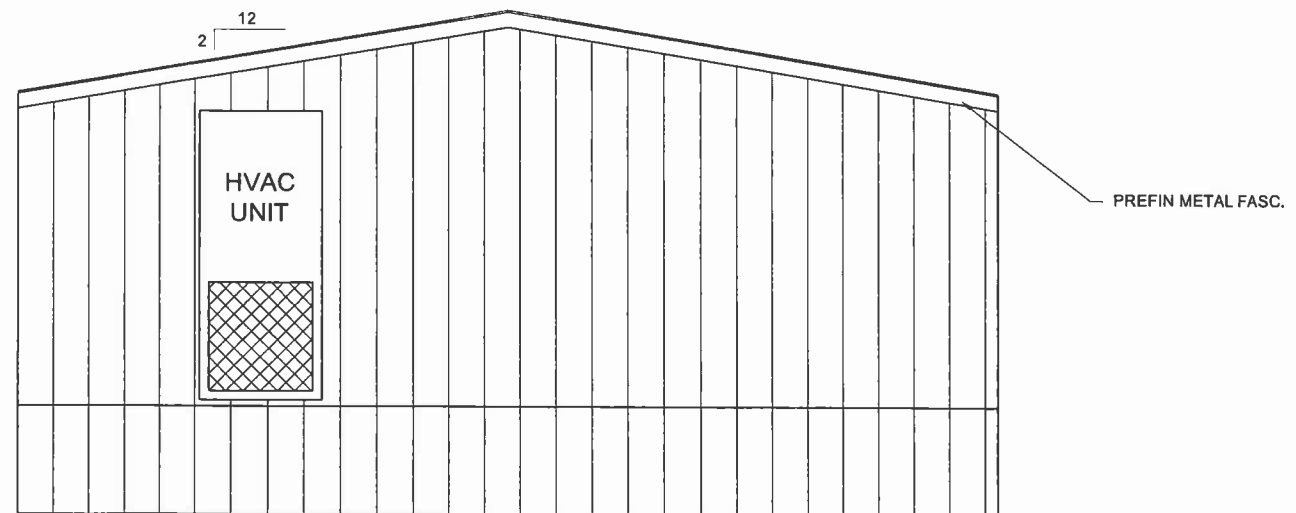
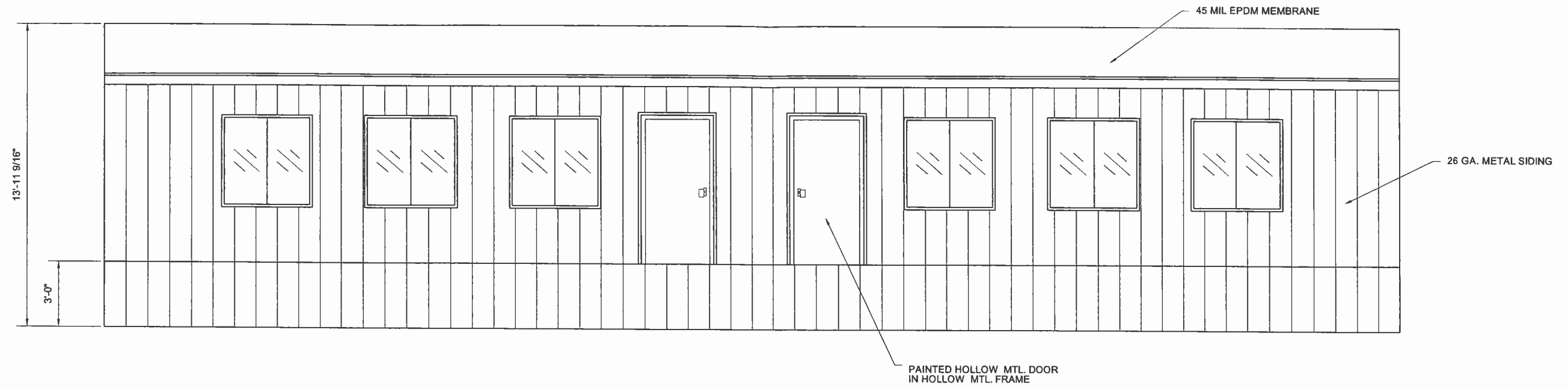
THRESHOLDS NOT TO EXCEED 1/2", AND ARE TO BE BEVELED IF IN EXCESS OF 1/4"

FLOOR PLAN IS A REPRESENTATION OF SAMPLE BUILDING  
 CUSTOM CONFIGURATIONS ARE AVAILABLE UPON REQUEST

No.	DESCRIPTION	BY	DATE

DATE:	6-8-07
SCALE:	3/16"=1'-0"
PLOT SCALE:	1:1
DRAWN BY:	ES
CHECKED BY:	

FLOOR PLAN  
 TEXAS STANDARD CLASSROOM  
 JOB #: M7528  
 SERIAL #: 3028 A-B



CUSTOM CONFIGURATIONS ARE  
AVAILABLE UPON REQUEST



No.	DESCRIPTION	BY	DATE
1	GENERAL REVISIONS	BA	7-6-07
2	CHANGED SIDING CALLOUT	BA	7-12-07

DATE:	6-8-07
SCALE:	3/16"=1'-0"
PLOT SCALE:	1:1
DRAWN BY:	ES
CHECKED BY:	

ELEVATIONS  
TEXAS STANDARD CLASSROOM  
JOB #: M7528  
SERIAL #: 3028 A-B

SHEET No.  
**A-3**